

RA-915F

Zeeman mercury analyzer



Method of Measurement

Atomic absorption spectrometry at 254 nm with Zeeman correction for interference-free measurements.

Applications

Direct determination of the mercury concentration in solid and liquid samples, such as:

- ✓ crude oil and naphtha
- ✓ method 30B and PS12B sorbent traps
- ✓ coal, fly ash, gypsum
- ✓ foodstuff and biological materials
- ✓ waste waters and sludge
- ✓ soils and sediments

Principle of Operation

Direct thermal decomposition of a sample and subsequent measuring the absorption of the 254-nm resonance radiation by mercury atoms using Zeeman correction for background absorption.

Features and Benefits

- ✓ Direct mercury determination in samples with complex matrices
- ✓ Highest selectivity
- ✓ No pre-treatment procedures required
- ✓ Broad dynamic measurement range: > 5 orders of magnitude
- ✓ No memory effect
- ✓ Automated temperature adjustment control for dynamic range enlargement
- ✓ Thermoscanning option
- ✓ Visualization of mercury output from the sample, user-friendly computer interface
- ✓ High calibration stability
- ✓ No carrier gas is needed

Specifications

| | |
|--|-----------------------|
| Detection limit | 0.5–3 µg/kg |
| Ladles volume | 1.2 / 2.5 mL |
| Upper limit of the measurement range of concentration for a 20 mg sample | 2000 mg/kg |
| Analysis time | 1–5 min |
| Power supply | 110–242 VAC, 50/60 Hz |

MEASUREMENT UNIT

| | |
|--------------------|----------------|
| Dimensions (LxWxH) | 175×110×235 mm |
| Weight | 4.0 kg |

SAMPLING UNIT

| | |
|---|----------------|
| Dimensions of power supply unit (LxWxH) | 380×260×130 mm |
| Weight of power supply unit | 10 kg |
| Dimensions of thermal chamber unit and optical unit (LxWxH) | 350×350×120 mm |
| Weight of thermal chamber unit and optical unit | 7.5 kg |

DELIVERY SET

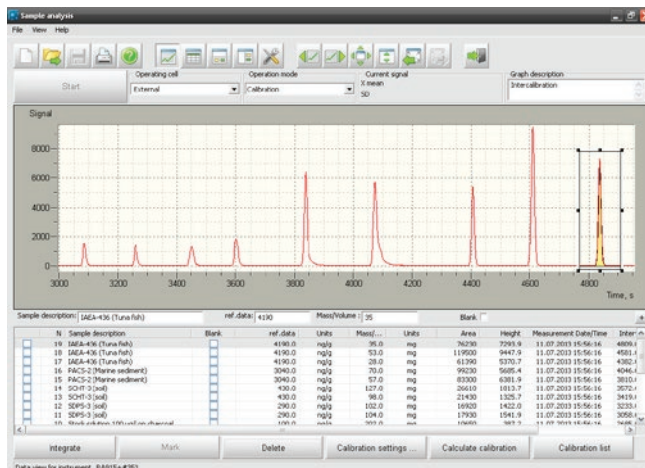
RA-915F Zeeman mercury analyzer comes with RAPID software, interface cables, user manual.

WARRANTY

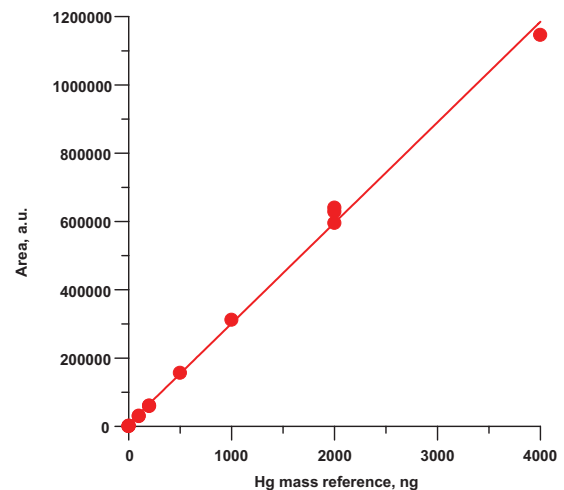
RA-915F Zeeman mercury analyzer is covered by 12-months limited warranty.

SERVICES

Upon request installation and commissioning of RA-915F Zeeman mercury analyzer can be carried out on Customer's site by our service engineers. Support and training of operators, meeting Customer's specific needs, are provided by highly qualified application engineers.



Linear calibration in a range of 40 – 40,000 ng Hg
Wide dynamic range



Liquid & Solid Samples Analysis
Fast and simple



Find your local Lumex Instruments distributor

www.lumexinstruments.com

sales@lumexinstruments.com