

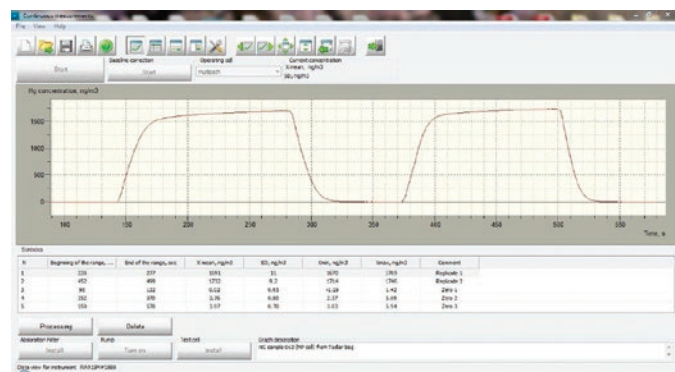
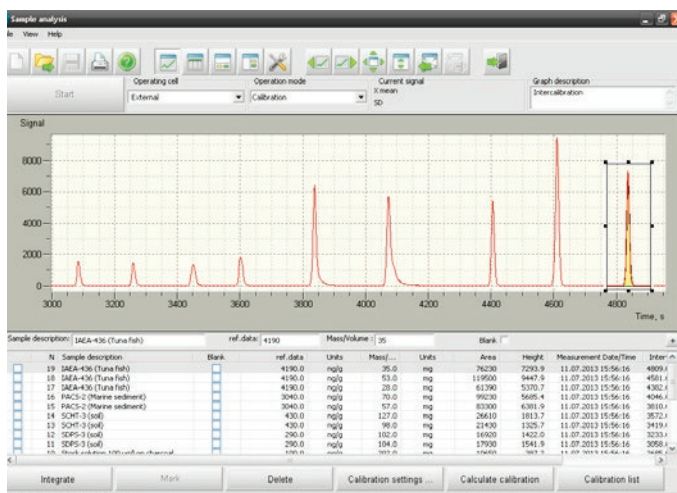
RAPID Software

for LUMEX RA-915M & RA-915+ Mercury Analyzers



Powerful software for data acquisition and processing

- + User friendly interface
- + Customizable templates for data reporting
- + 21 CFR Part 11 compliance – supports User level management and electronic signatures
- + RAPID Software enhances operation with the RA-915+ models
- + for Windows® 2000/XP/Vista/7/8/10

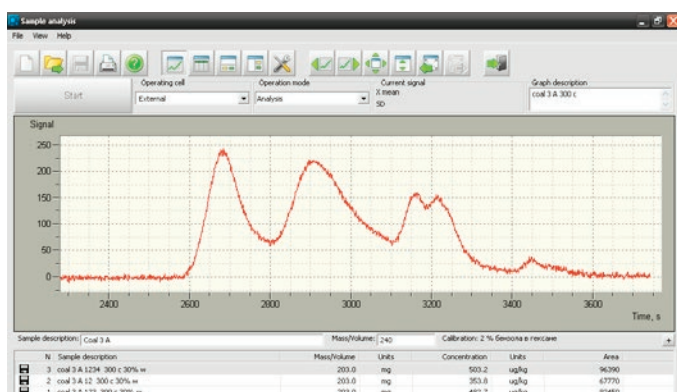


Air & Natural Gas Analysis & Monitoring

Flexible and convenient

Liquid & Solid Samples Analysis

Fast, clear and simple



Thermo-scanning

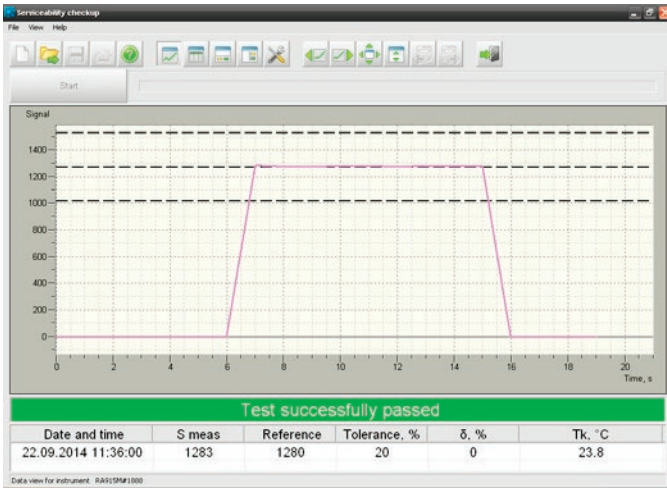
Comprehensive information about mercury, its species and their conversion



Closed-loop Automatic Temperature Adjustment Control for Dynamic Range Enlargement

Analysis of samples with high mercury concentration, up to 2,000 mg/kg

QA/QC & Data management



Instrument Check-up

Fully automated self verification procedure



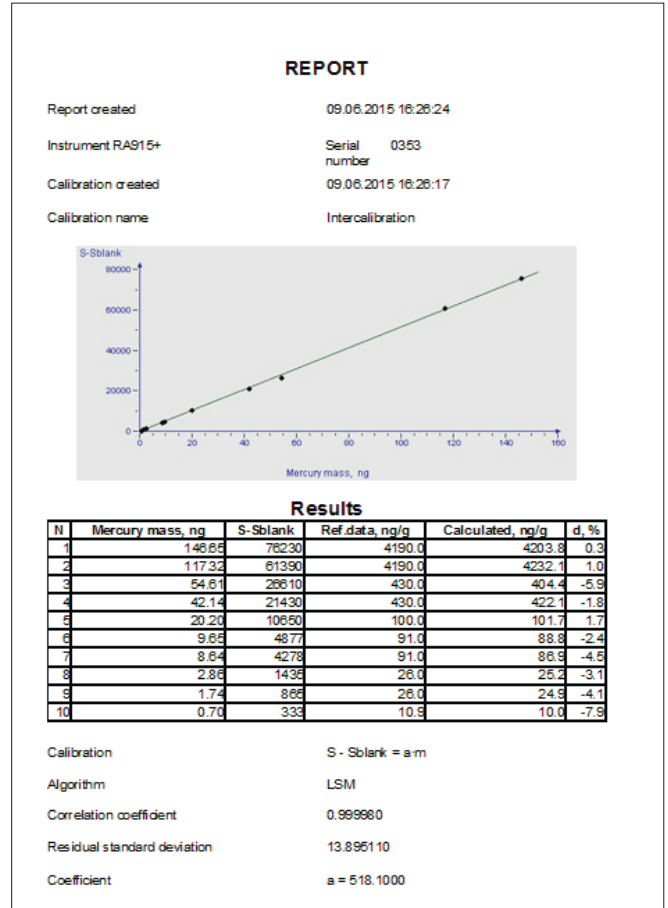
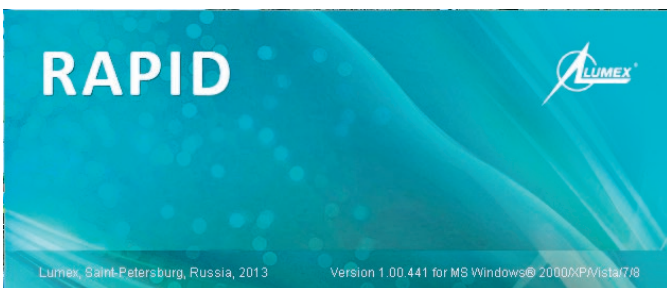
Calibration

Create, browse and apply to your data

| N | Sample description | Mass/Volume | Concentration | Units | Calculated |
|-----|--------------------------|-------------|---------------|-------|---------------------|
| 653 | Coal, Spent, Emma1234 | 210.0 mg | 421.1 | ug/g | 09.06.2015 15:58:07 |
| 652 | Coal, Spent, Emma 1234 | 210.0 mg | 313.5 | ug/g | 09.06.2015 15:58:03 |
| 651 | Coal, Spent, Emma 123 | 210.0 mg | 279.0 | ug/g | 09.06.2015 15:57:59 |
| 650 | Coal, Spent, Emma 1 | 210.0 mg | 41.6 | ug/g | 09.06.2015 15:57:51 |
| 649 | Coal, Spent, Emma 12 | 210.0 mg | 179.2 | ug/g | 09.06.2015 15:57:29 |
| 648 | coal 3 A 124 300 c 30% w | 200.0 mg | 323.2 | ug/g | 09.06.2015 18:02:30 |
| 647 | coal 3 A 12 300 c 30% w | 200.0 mg | 353.8 | ug/g | 09.06.2015 18:02:15 |
| 646 | coal 3 A 123 300 c 30% w | 200.0 mg | 482.7 | ug/g | 09.06.2015 18:02:31 |
| 645 | coal 3 A 1 300 c 30% w | 200.0 mg | 137.3 | ug/g | 09.06.2015 17:57:07 |
| 644 | coal 3 A 1 300 c | 260.0 mg | 112.5 | ug/g | 09.06.2015 17:56:36 |
| 643 | coal 3 A 12 300 c | 260.0 mg | 328.6 | ug/g | 09.06.2015 17:56:31 |
| 642 | coal 3 A 123 300 c | 260.0 mg | 499.5 | ug/g | 09.06.2015 17:56:26 |
| 641 | coal 3 A 124 300 c | 260.0 mg | 473.5 | ug/g | 09.06.2015 17:56:14 |
| 640 | pyrite X = 300 c 1234 | 200.0 mg | 473.1 | ug/g | 04.06.2015 17:52:05 |
| 639 | pyrite X = 300 c 123 | 200.0 mg | 432.2 | ug/g | 04.06.2015 17:50:55 |
| 638 | pyrite X = 300 c 12 | 200.0 mg | 166.6 | ug/g | 04.06.2015 17:50:30 |
| 637 | pyrite X = 300 c 1 | 200.0 mg | 59.5 | ug/g | 04.06.2015 17:38:08 |
| 636 | sludge Prod Forest 123 | 204.0 mg | 1773.0 | ug/g | 04.06.2015 17:17:09 |
| 635 | sludge Prod Forest 12 | 204.0 mg | 1730.0 | ug/g | 04.06.2015 17:17:04 |
| 634 | sludge Prod Forest 1 | 204.0 mg | 1074.0 | ug/g | 04.06.2015 15:56:51 |
| 633 | pyrite X 12345 | 292.0 mg | 537.6 | ug/g | 04.06.2015 15:03:22 |
| 632 | pyrite X 1234 | 292.0 mg | 542.4 | ug/g | 04.06.2015 15:03:10 |
| 631 | pyrite X 123 | 292.0 mg | 365.5 | ug/g | 04.06.2015 15:02:44 |
| 630 | pyrite X 12 | 292.0 mg | 141.9 | ug/g | 04.06.2015 15:02:30 |
| 629 | pyrite X 1 | 292.0 mg | 9.7 | ug/g | 04.06.2015 15:01:45 |
| 628 | coal 3A 12345 | 220.0 mg | 470.7 | ug/g | 03.06.2015 17:13:20 |
| 627 | coal 3A 1234 | 220.0 mg | 464.7 | ug/g | 03.06.2015 17:12:50 |
| 626 | coal 3A 123 | 220.0 mg | 425.9 | ug/g | 03.06.2015 17:12:43 |
| 625 | coal 3A 12 | 220.0 mg | 265.5 | ug/g | 03.06.2015 17:06:40 |
| 624 | coal 3A 1 | 220.0 mg | 45.1 | ug/g | 03.06.2015 17:06:09 |

Measurement Database

Browse, process and report data



Documentation Process

Customizable templates for data reporting



Find your local Lumex Instruments distributor

www.lumexinstruments.com

@sales@lumexinstruments.com