

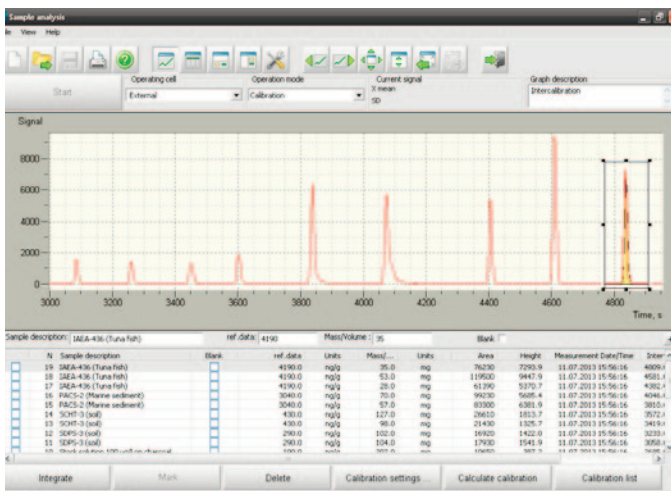
# RAPID Software

for LUMEX RA-915M & RA-915+ Mercury Analyzers



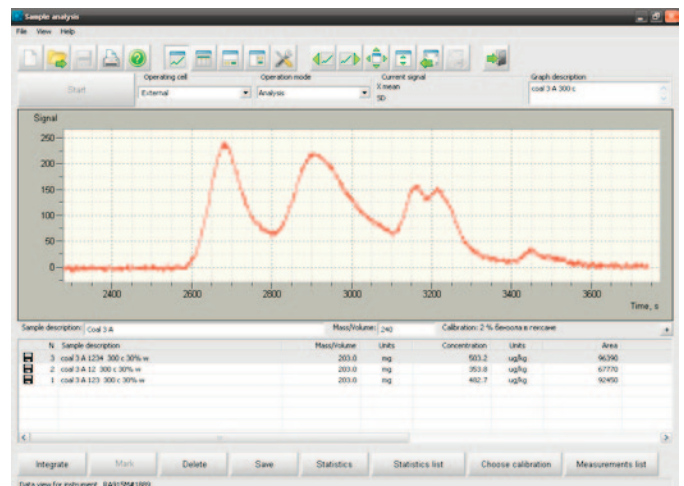
## Powerful software for data acquisition and processing

- ❖ User friendly interface
- ❖ Customizable templates for data reporting
- ❖ 21 CFR Part 11 compliance – supports User level management and electronic signatures
- ❖ RAPID Software enhances operation with the RA-915+ models
- ❖ for Windows® 2000/XP/Vista/7/8/10



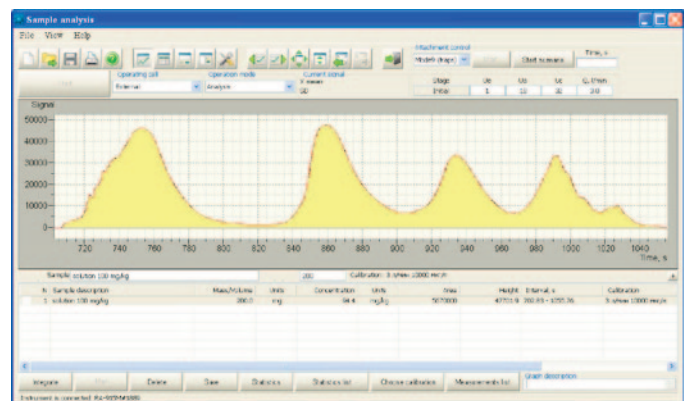
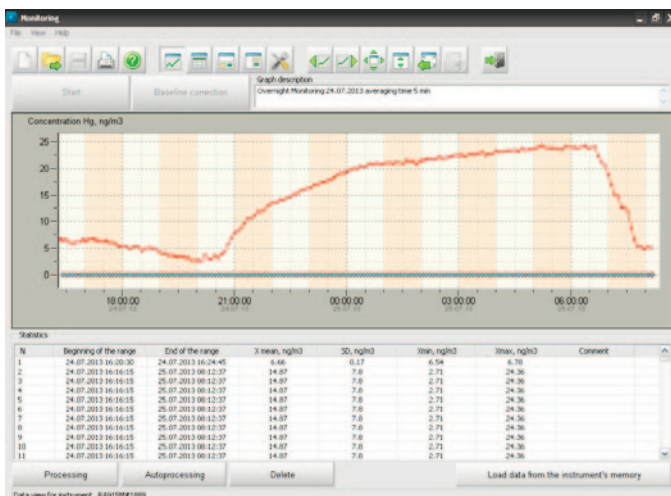
## Liquid & Solid Samples Analysis

Fast, clear and simple



## Air & Natural Gas Analysis & Monitoring

Flexible and convenient



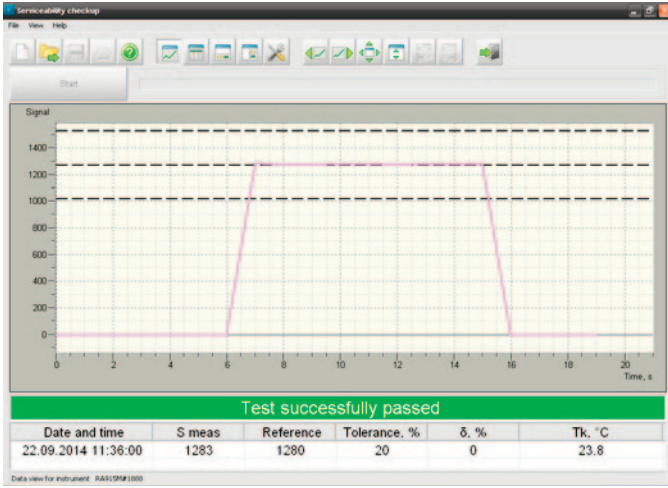
## NEW Closed-loop Automatic Temperature Adjustment Control for Dynamic Range Enlargement

Analysis of samples with high mercury concentration

## NEW Thermo-scanning

Comprehensive information about mercury, its species and their conversion

# QA/QC & Data management



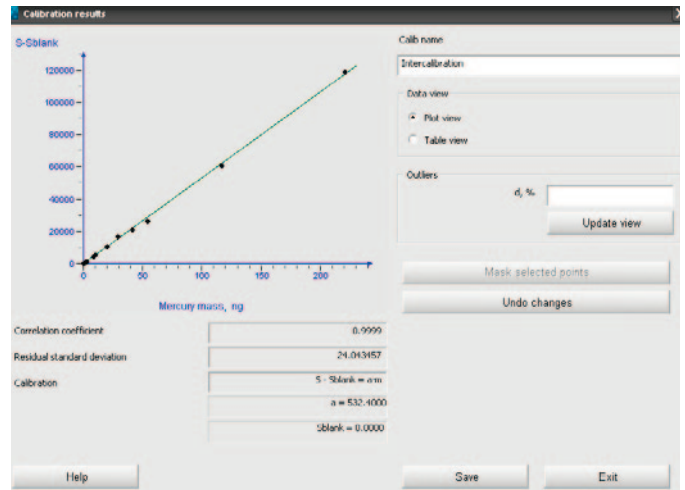
## Instrument Check-up

Fully automated self verification procedure

| N   | Sample description       | Mass/volume | Concentration | IPH   | Calculated          |
|-----|--------------------------|-------------|---------------|-------|---------------------|
| 653 | Coal, Spent, Emma12345   | 210.0 mg    | 422.1         | ug/kg | 09.06.2015 15:50:07 |
| 652 | Coal, Spent, Emma 1234   | 210.0 mg    | 313.5         | ug/kg | 09.06.2015 15:50:03 |
| 651 | Coal, Spent, Emma123     | 210.0 mg    | 239.0         | ug/kg | 09.06.2015 15:50:05 |
| 650 | Coal, Spent, Emma 1      | 210.0 mg    | 41.6          | ug/kg | 09.06.2015 15:57:51 |
| 649 | Coal, Spent, Emma12      | 420.0 mg    | 179.2         | ug/kg | 09.06.2015 15:57:29 |
| 648 | coal 3 A 1234 300c 30% w | 200.0 mg    | 503.2         | ug/kg | 09.06.2015 16:02:38 |
| 647 | coal 3 A 12 300c 30% w   | 200.0 mg    | 353.8         | ug/kg | 09.06.2015 16:02:35 |
| 646 | coal 3 A 123 300c 30% w  | 200.0 mg    | 482.7         | ug/kg | 09.06.2015 16:03:33 |
| 645 | coal 3 A 1 300c 30% w    | 200.0 mg    | 137.3         | ug/kg | 09.06.2015 17:57:07 |
| 644 | coal 3 A 1 300c          | 200.0 mg    | 112.5         | ug/kg | 09.06.2015 17:56:36 |
| 643 | coal 3 A 12 300c         | 200.0 mg    | 328.6         | ug/kg | 09.06.2015 17:56:31 |
| 642 | coal 3 A 123 300c        | 200.0 mg    | 449.5         | ug/kg | 09.06.2015 17:56:24 |
| 641 | coal 3 A 1234 300c       | 200.0 mg    | 473.5         | ug/kg | 09.06.2015 17:56:14 |
| 640 | pyrite 1 = 300c 1234     | 200.0 mg    | 473.1         | ug/kg | 04.06.2015 17:52:05 |
| 639 | pyrite 1 = 300c 123      | 200.0 mg    | 429.2         | ug/kg | 04.06.2015 17:50:55 |
| 638 | pyrite 1 = 300c 12       | 200.0 mg    | 166.6         | ug/kg | 04.06.2015 17:50:39 |
| 637 | pyrite 1 = 300c 1        | 200.0 mg    | 59.5          | ug/kg | 04.06.2015 17:50:08 |
| 636 | sludge Feed forest 123   | 204.0 mg    | 1772.0        | ug/kg | 04.06.2015 17:47:09 |
| 635 | sludge Feed forest 12    | 204.0 mg    | 1720.0        | ug/kg | 04.06.2015 17:47:04 |
| 634 | sludge Feed forest 1     | 204.0 mg    | 1074.0        | ug/kg | 04.06.2015 15:36:53 |
| 633 | pyrite 1 12345           | 292.0 mg    | 537.6         | ug/kg | 04.06.2015 15:03:22 |
| 632 | pyrite 1 1234            | 292.0 mg    | 542.4         | ug/kg | 04.06.2015 15:03:10 |
| 631 | pyrite 1 123             | 292.0 mg    | 365.5         | ug/kg | 04.06.2015 15:02:44 |
| 630 | pyrite 1 12              | 292.0 mg    | 141.9         | ug/kg | 04.06.2015 15:02:38 |
| 629 | pyrite 1 1               | 292.0 mg    | 9.7           | ug/kg | 04.06.2015 15:02:45 |
| 628 | coal 3A 12345            | 420.0 mg    | 470.7         | ug/kg | 03.06.2015 17:13:20 |
| 627 | coal 3A 1234             | 200.0 mg    | 464.7         | ug/kg | 03.06.2015 17:12:50 |
| 626 | coal 3A 123              | 200.0 mg    | 425.9         | ug/kg | 03.06.2015 17:12:43 |
| 625 | coal 3A 12               | 200.0 mg    | 285.5         | ug/kg | 03.06.2015 17:08:40 |
| 624 | coal 3A 1                | 200.0 mg    | 65.1          | ug/kg | 03.06.2015 17:08:08 |

## Measurement Database

Browse, process and report data



## Calibration

Create, browse and apply to your data

### REPORT

Report created: 09.06.2015 16:26:24  
 Instrument RA915+ Serial number: 0353  
 Calibration created: 09.06.2015 16:26:17  
 Calibration name: Intercalibration

#### Results

| N  | Mercury mass, ng | S-Blank | Ref data, ng/g | Calculated, ng/g | d, % |
|----|------------------|---------|----------------|------------------|------|
| 1  | 148.66           | 76230   | 4190.0         | 4203.8           | 0.3  |
| 2  | 117.32           | 61390   | 4190.0         | 4232.1           | 1.0  |
| 3  | 54.61            | 26610   | 430.0          | 404.4            | -5.9 |
| 4  | 42.14            | 21430   | 430.0          | 422.1            | -1.8 |
| 5  | 20.20            | 10850   | 100.0          | 101.7            | 1.7  |
| 6  | 9.66             | 4877    | 91.0           | 88.8             | -2.4 |
| 7  | 8.64             | 4278    | 91.0           | 86.9             | -4.5 |
| 8  | 2.86             | 1436    | 26.0           | 25.2             | -3.1 |
| 9  | 1.74             | 866     | 26.0           | 24.9             | -4.1 |
| 10 | 0.70             | 333     | 10.9           | 10.0             | -7.9 |

Calibration: S - Sblank = a\*m  
 Algorithm: LSM  
 Correlation coefficient: 0.999980  
 Residual standard deviation: 13.895110  
 Coefficient: a = 518.1000

## Documentation Process

Customizable templates for data reporting



The information and specifications in this publication are subject to change without notice.

**Lumex Instruments Canada**  
 0890278 B.C. Ltd.  
 Unit 207, 31510 Gill Ave.,  
 Silver Creek Industrial Park  
 Mission, B.C., V4S0A1, Canada  
 Phone: +1 604-820-8085  
 +1 866-233-6057  
 E-mail:  
 sales@lumexinstruments.com  
[www.lumexinstruments.com](http://www.lumexinstruments.com)

**Lumex Analytics GmbH**  
 Naher str., 8  
 24558 Wakendorf II, Germany  
 Tel.: +49 (0) 4535 297-756  
 Fax: +49 (0) 4535 297-783  
 E-mail: info@lumexanalytics.de  
[www.lumexanalytics.de](http://www.lumexanalytics.de)

**Lumex-Marketing LLC**  
 pr. Obukhovskoy Oborony, 70,  
 bldg. 2, St. Petersburg 192029,  
 Russia  
 Tel.: +7 (812) 718-5390  
 Fax: +7 (812) 718-5399  
 E-mail: sales@lumex.ru  
 Post address:  
 BOX 1234, St. Petersburg,  
 190000, Russia  
[www.lumex.ru](http://www.lumex.ru)

**Beijing Lumex Analytical Equipment Co. Ltd.**  
 Level 19, Tower E2, Oriental Plaza,  
 1 East Chang An Avenue,  
 Dong Cheng District,  
 Beijing 100738, China  
 Tel.: +86 (10) 6412-9525  
 Fax: +86 (10) 6242-3844  
 E-mail:  
 lumexcn@lumex.com.cn  
[www.lumexcn.com](http://www.lumexcn.com)

